



# Instructions

## **JK MODULAR FRONT BUMPER - SPLASH GUARD WITH LIGHT MOUNT**

---

Thank you for purchasing your JK Modular Front Bumper Splash Guard/Light Mount from AAL! We greatly appreciate your trust in our company. We take that purchase and your commitment to us very seriously. If you have any questions along the way, please don't hesitate to give us a call at 385.202.4188.

**\*\*These instructions apply to both the splash guard with, and without a light guard Mount\*\***

### **Tools Required:**

There is more than one tool for every job, but below is the list of tools we use for this installation.

- M4 Allen Socket/Wrench
- M5 Allen Wrench/Socket
- Ratchet

### **What's included:**

### **Parts**

Splash Guard with Light Mount (1):



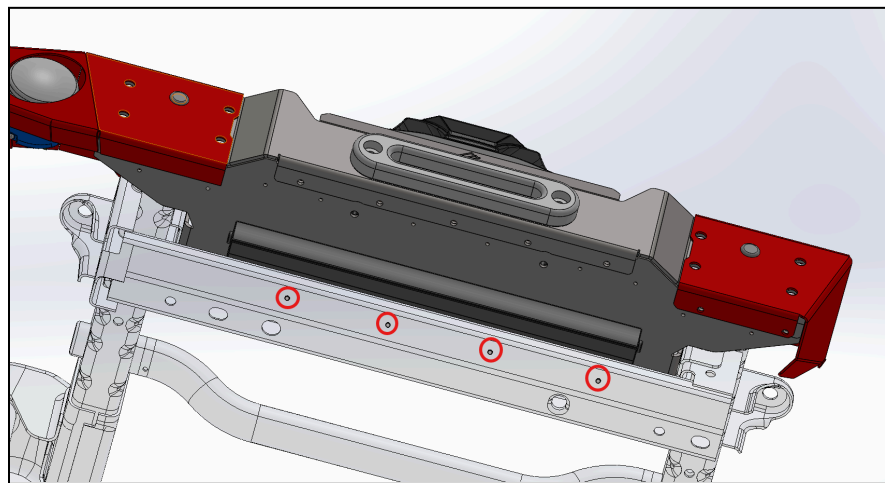
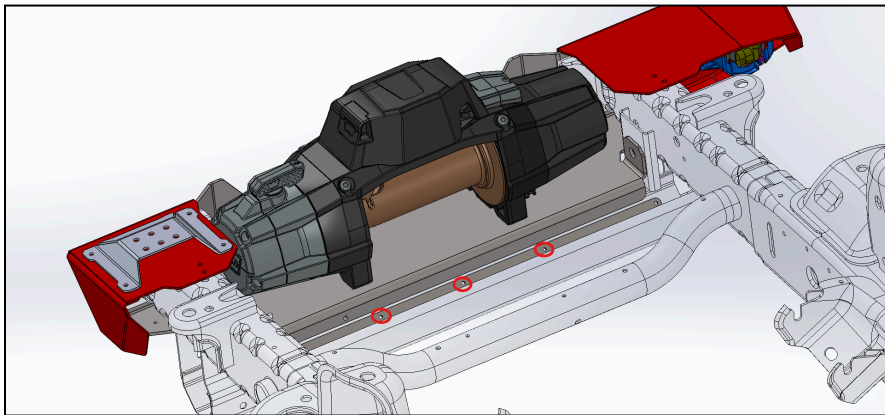
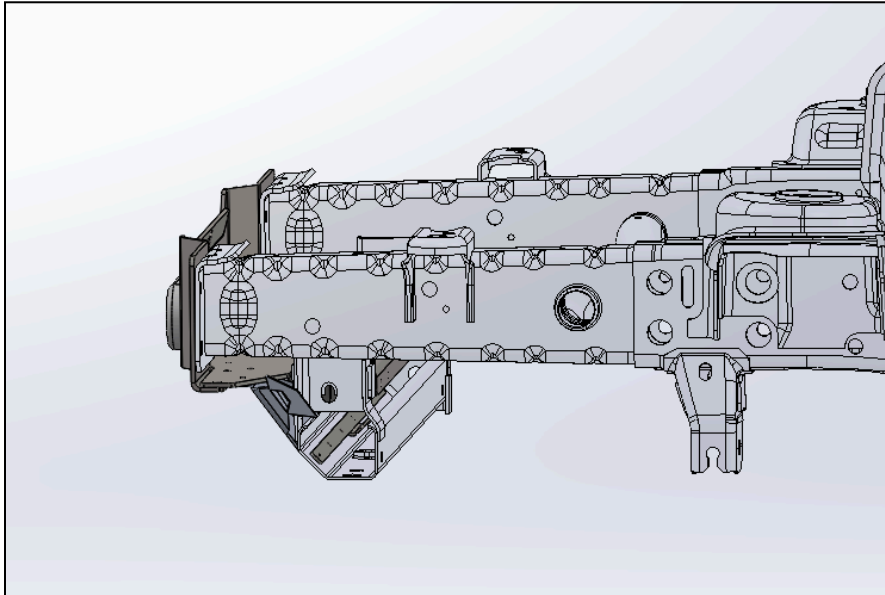
### **Hardware**

M6x14mm Button Head Flange Bolts (8 with mount, 14 without)

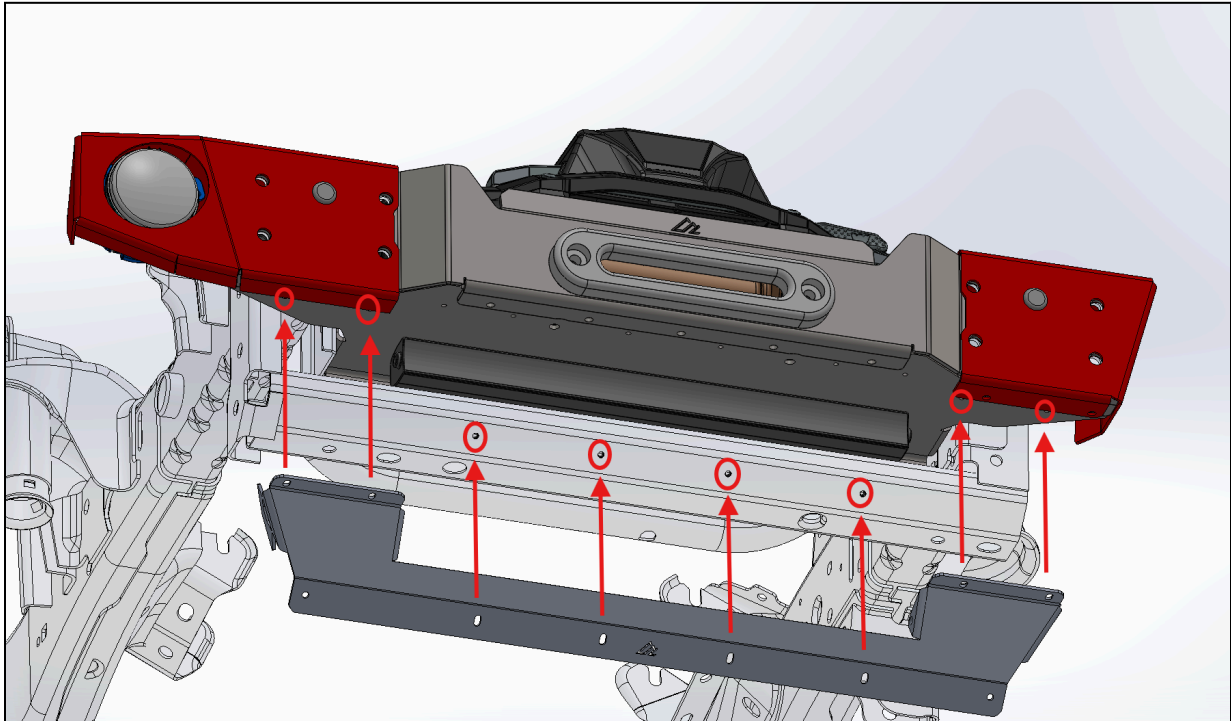
**\*\*We recommend using a medium duty thread locker on all hardware.\*\***

## **With Light Mount Installation**

There isn't much to this install, first align the nut plate with the holes at the bottom face of the bumper as shown below. You're going to have to slide the plate into position from the side of the car frame.



Then simply hold the Splash Guard up under the bottom of the Modular Front Bumper, and install the hardware using (8) M4x16mm Button Head Flange Bolts.



**Note** - There are multiple ways to mount a light bar. We've added basic provisions to mount a 20" single row light bar, but we leave it up to the customer's discretion on how they install their light bar.



## **Share Your Photos**

We take great pride in building our products and we hope that pride extends to you after installing your JK Modular Front Bumper Splash Guard/Light Mount. If you are able to share your photos online (Facebook and Instagram), please tag **@AmericanAdventureLab**. We would love to see how it turned out and give you some reciprocal attention in return!

**Congrats! You're all done!**  
**Thank you!**

**At American Adventure Lab, we strive to improve anywhere we can. If you experience any issues with this product or have any suggestions, please let us know.**

**If you have any questions or concerns, please don't hesitate to reach out to us at 385.202.4188 or via email at [Support@erp.adventurelab.com](mailto:Support@erp.adventurelab.com).**

